

CAMDS <> IMDS

Automate your ELV Processes globally

Situation

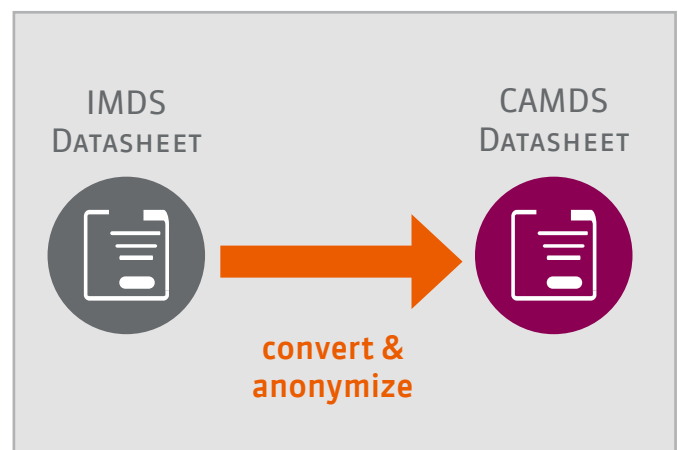
In late 2015, Chinese authorities issued a specification detailing the information automotive OEMs are required to deliver for a type approval. This means that OEMs now not only have to collect information on materials for the International Material Data System (IMDS), but also for the China Automotive Material Data System (CAMDS), a product data management platform developed by CATARC (China Automotive Technology & Research Center) and several Chinese OEMS.

Challenge

In addition to IMDS data, every automotive manufacturing company also has to provide CAMDS data to the customers and authorities. However, the supplier data are not available, and the process has to be put in motion by the entire supply chain, from the bottom to the top. When IMDS was introduced, the learning curve of this process extended over a period of five years. Although the learning curve is likely to be shorter in the case of CAMDS, since all the relevant data and processes are already in place due to IMDS-related efforts, companies are dealing with a duplication of efforts, since CAMDS-convenient supplier data are not available at short notice. As long as a company doesn't have supplier data in CAMDS, these data can only be transferred manually from IMDS into CAMDS. This is a very cumbersome and error-prone process if not implemented by experienced experts.

Solution

With iPoint's CAMDS & IMDS solution, you can convert and anonymize data sheets from iPCA/IMDS to iPCA/CAMDS in a highly automatized process – without having to reveal business-sensitive information about your supply chain, suppliers, etc. iPoint's solution subsequently lets you send the created data sheet to CAMDS and the customer in CAMDS automatically.



Speed up your CAMDS process with iPoint's CAMDS & IMDS solution

BENEFITS

- ➔ Improve efficiency and quality through automatization
- ➔ Speed up your CAMDS process by using existing IMDS data without having to wait for CAMDS data from your supplier
- ➔ Reduce efforts for CAMDS datasheet creation – Based on the feedback of our customers, the efforts for creating CAMDS datasheets with iPoint's solution are less than 20% of manual data entry processes
- ➔ Minimize training effort due to similarly designed IMDS and CAMDS user interfaces in the iPCA module
- ➔ Build on existing data and processes
- ➔ Benefit from the know-how of the world's number one provider of IMDS Inhouse systems
- ➔ Conceal business relationships and business-sensitive supply chain data when using supplier data from IMDS in CAMDS
- ➔ Implementation in well-known and widely-used iPCA user environment



iPoint

iPOINT COMPLIANCE AGENT

CAMDS <> IMDS

Automate your ELV Processes globally

FEATURES

- Automated conversion of your existing IMDS data for CAMDS
- BOM import from connected PDM system
- Automated update of compliance check routines in case of regulatory changes
- Integrated business process management
- Integration to existing IT environments

REQUIRED iPoint SOFTWARE MODULES

- iMDS/IHS main module
- CAMDS/IHS main module
- IMDS-CAMDS Converter
- PDM interface

SERVICES

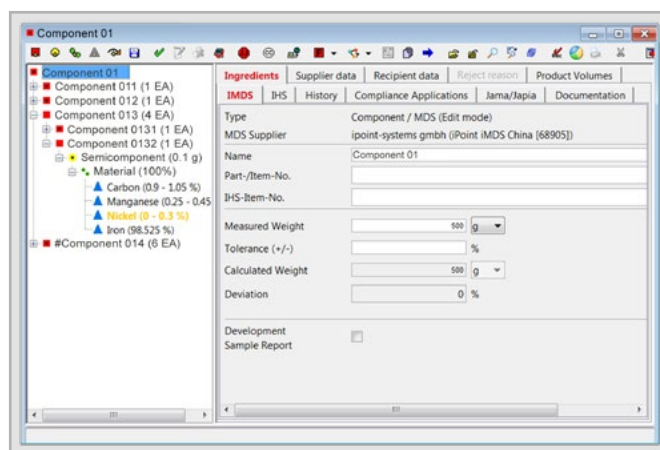
Please note: iPoint also provides complete application hosting services as well as data entry services. For more service options, visit our website:

- ipoint-systems.com/services/

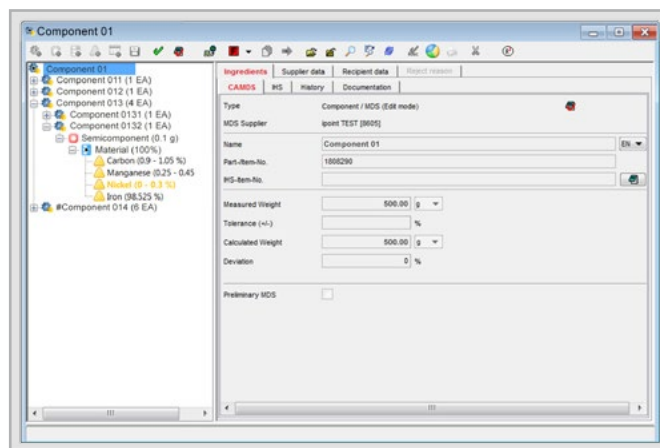
OUR SOLUTIONS

Learn more about our CAMDS and IMDS solutions on our website:

- ipoint-systems.com/integrated-solutions/camds/
- ipoint-systems.com/integrated-solutions/elv-imds-camds/



Reducing effort through similarity: The iPCA user interface for IMDS...



...and the iPCA user interface for CAMDS.

Your Product Compliance contact

If you have any questions concerning the iPCA CAMDS solution, our experts are happy to help:

Achim Schrempp

- achim.schrempp@ipoint-systems.de

Jan Hospodarsky

- jan.hospodarsky@ipoint-systems.de